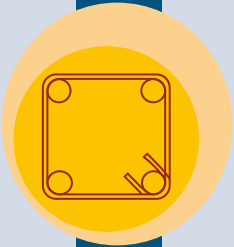


CDR

All type of shapes for concrete reinforcing elements in steel rebar ready to assemble, according to customer schematics or standard dimensions. The possible steel grades are B500A, B400B, FL500 or E240



Stirrups

Stirrups:

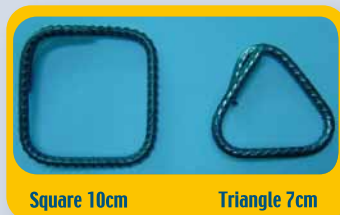
Frames, links, candy-cranes and other

Frame:

- All dimensions of square and rectangular frames
- Wire diameter from 5mm to 12mm



*Frames for grapevine tree concrete column



Links:

- All link lengths
- Wire diameter from 5mm to 12mm



*Multi row links



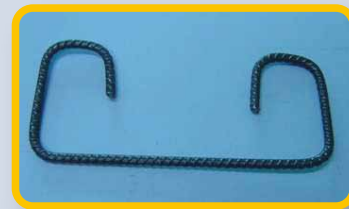
Candy-cranes:

- All lengths
- Wire diameter from 5mm to 12mm



Other shapes:

Customized shapes



* Scaffolding column hook

